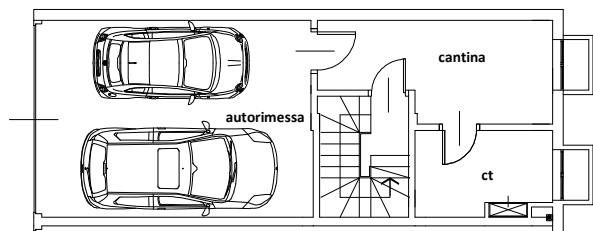
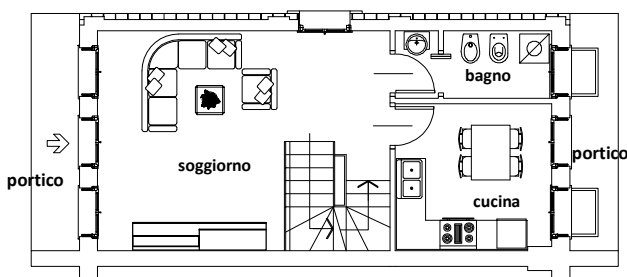


I NOCCIOLI - Golasecca

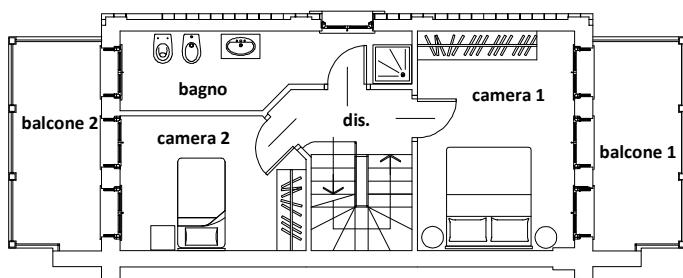
blocco B - app. 8



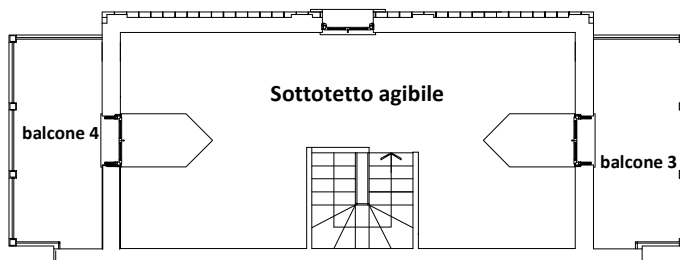
Piano Interrato



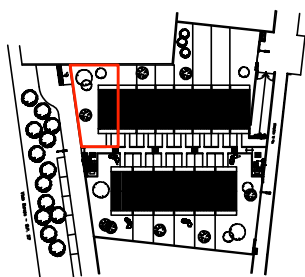
Piano Terra



Piano Primo



Piano Secondo (mansarda)



tipologia B - prospetto sud-est



tipologia B - prospetto nord-ovest

superficie commerciale

LOCALE	COEFF.	SUP.	LOCALE	COEFF.	SUP.
Cantina + centrale termica	0,50	14,75	Sottotetto	0,70	35,88
Locali P.T.	1,00	51,26	Garage	0,50	14,85
Locali 1 P	1,00	51,26	Portici	0,50	4,98
Balconi	0,50	16,82	Giardino	0,30	46,77
TOT Sup. Commerciale					236,57