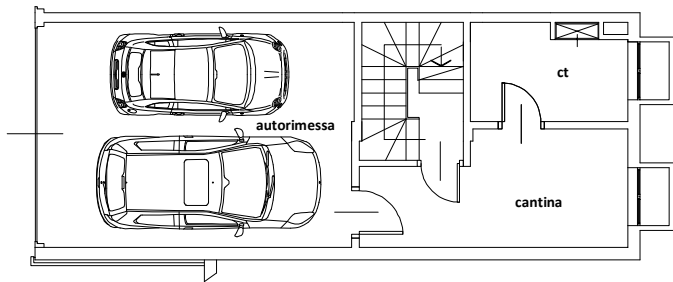
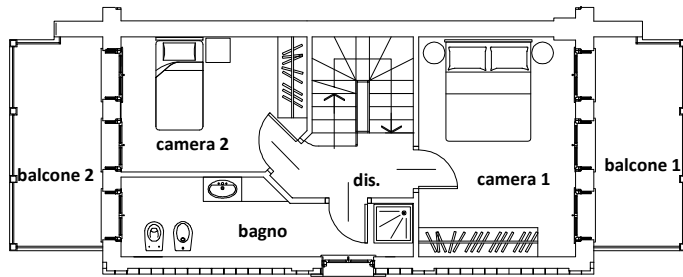
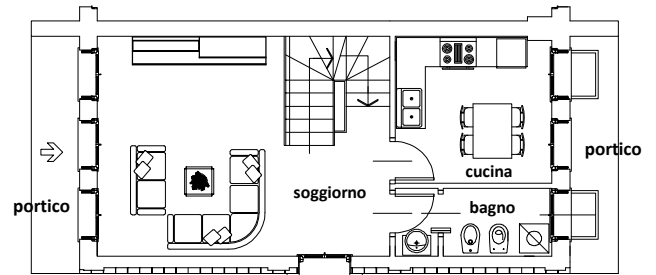


I NOCCIOLI - Golasecca

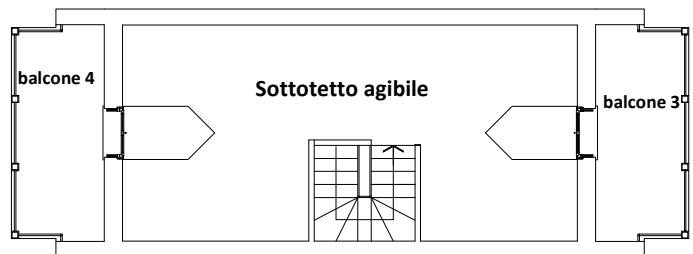
blocco B - app. 1



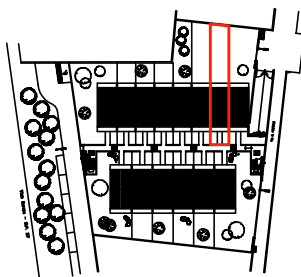
Piano Interrato



Piano Primo



Piano Secondo (mansarda)



tipologia B - prospetto sud-est



tipologia B - prospetto nord-ovest

superficie commerciale

LOCALE	COEFF.	SUP.	LOCALE	COEFF.	SUP.
Cantina + centrale termica	0,50	14,75	Sottotetto	0,70	35,88
Locali P.T.	1,00	51,26	Garage	0,50	14,70
Locali 1 P	1,00	51,26	Portici	0,50	4,48
Balconi	0,50	16,82	Giardino	0,30	25,90
TOT Sup. Commerciale					215,05