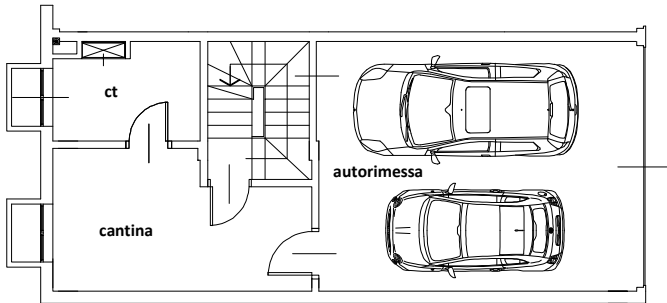
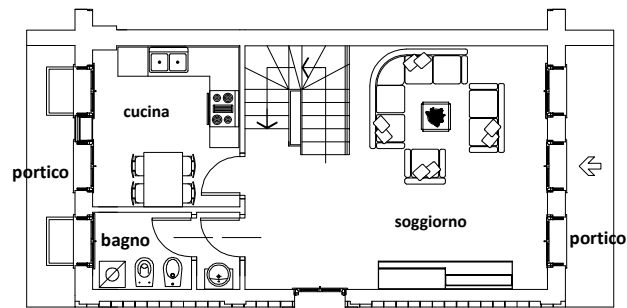


I NOCCIOLI - Golasecca

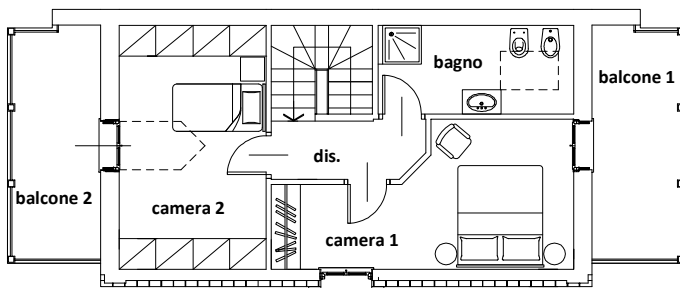
blocco A - app. 1



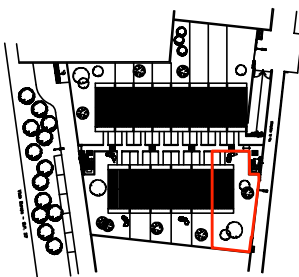
Piano Interrato



Piano Terra



Piano Primo



tipologia A - prospetto sud-est



tipologia A - prospetto nord-ovest

superficie commerciale

LOCALE	COEFF.	SUP.	LOCALE	COEFF.	SUP.
Cantina + centrale termica	0,50	15,68	Garage	0,50	18,70
Locali P.T.	1,00	56,32	Portici	0,50	5,40
Locali 1 P	1,00	56,32	Giardino	0,30	58,65
Balconi	0,50	9,38			
TOT Sup. Commerciale					220,45